



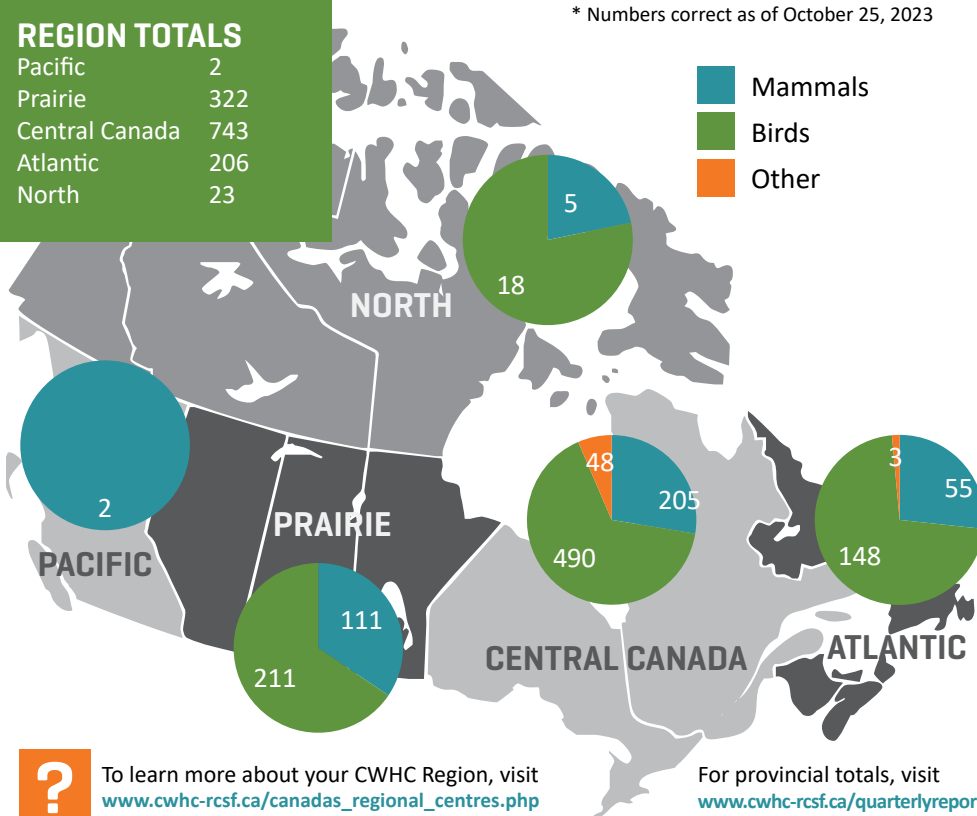
ANIMALS SUBMITTED by region

1296 ANIMALS TOTAL

* Numbers correct as of October 25, 2023

REGION TOTALS

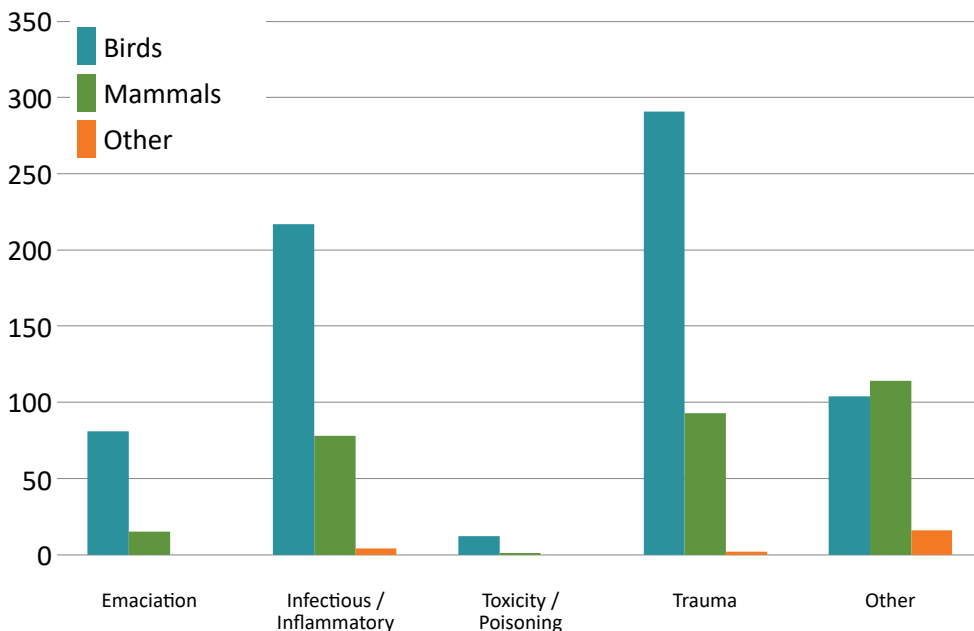
Pacific	2
Prairie	322
Central Canada	743
Atlantic	206
North	23



Mammals
Birds
Other

To learn more about your CWHC Region, visit www.cwhc-rcsf.ca/canadas_regional_centres.php
For provincial totals, visit www.cwhc-rcsf.ca/quarterlyreport

CAUSE OF DEATH category



PLEASE NOTE: An additional 695 cases submitted to CWHC in this quarter are still pending cause of death determination; 496 birds, 159 mammals, and 40 other species. 'Other' diagnoses include neoplastic, metabolic, and degenerative diseases as well as those cases where no cause of death could be determined.

SELECTED disease counts

RABIES

Examined	831
Positive	19

AVIAN CHOLERA

Examined	160
Positive	1

AVIAN INFLUENZA

Examined	716
Positive	30

PLEASE NOTE:

The AI viruses detected were of low-pathogenicity and North-American lineage. Both live bird samples and dead animal submissions are included.

AVIAN BOTULISM

Examined	160
Positive	1

NEWCASTLE DISEASE

Examined	315
Positive	0

WEST NILE VIRUS

Examined	867
Positive	118

PLEASE NOTE: The cases reported above represent the data that are currently available in the CWHC database and should be considered preliminary. These data do not include all diagnostic testing for the selected pathogens carried out in Canada; additional testing is performed by other agencies and organisations. Examined refers to any candidate species for this disease. Testing is not always performed, unless the disease is suspected during necropsy or histological examination. Numbers are correct as of October 25, 2023.

For more information visit www.cwhc-rcsf.ca/quarterlyreport



HIGHLIGHTS

CWHC participates in the delivery of BC bat capture course

This past July, Cori Lausen and her team with the Wildlife Conservation Society Canada shared their wealth of bat knowledge and experience by offering a bat capture course in the diverse ecosystems of southwestern British Columbia, with the highest bat species diversity in all of Canada.

I was lucky enough to be invited to help deliver the course and learn more about western Canadian bat biology. Most days started with in-class sessions covering a wide range of topics relevant to studying bats, including: net and trap types, welfare and handling considerations, decontamination, and much more. Late afternoons, we'd head to various field sites to set up nets and traps and prepare for a full night of capturing bats.

While I have been studying and capturing bats for about a decade, primarily in eastern Canada, I learned a lot from Cori and her team. The landscape and species diversity in British Columbia offer challenges as well as opportunities that are very different from those that I am familiar with.

FEATURED project

SECOND BEAUFORT SEA BELUGA HEALTH ASSESSMENT

A team from CWHC Québec travelled to the Inuvialuit settlement region in July to participate in long term studies on East Beaufort Sea beluga whale health in collaboration with the Fisheries Joint Management Committee (FJMC) and Department of Fisheries and Ocean Canada (DFO). This beluga population is estimated at approximately 32,000 individuals and is considered to be stable. This natural resource is of great importance for Inuvialuit settlement region communities which take great interest in beluga health and sustainability of this population in the face of climate change.

The current project is the continuation of a health assessment performed in 2015-2016 to monitor the health of belugas harvested as part of subsistence hunting from local communities. Necropsies are performed on harvested whales with samples, analyses and measurements taken.

A total of 21 whales were assessed over a two-week period. While further assessments and analyses are still pending, sampled whales generally appeared to be in good health. This year, future leaders from the Tuktoyaktuk community joined the team. They were able to harvest and traditionally prepare their whales for the community and generously supported research on beluga whale health by allowing their harvest to be weighed and by learning what beluga necropsies involve.



WILDLIFE HEALTH tracker



West Nile virus detected in SK wild birds

CWHC Western/Northern has detected West Nile virus in six dead wild birds from Saskatoon and Outlook, Saskatchewan.



Predation of grey seals by great white sharks

During the summer of 2023, the RQUMM received reports of several suspected cases of predation by sharks on marine mammals.



Glue traps result in animal cruelty

Earlier this summer three, 6 week old red squirrels were brought to the Wildlife Service in PEI. They had all been found stuck on a single glue trap.



Carnivorous Cervids

In July, a mule deer doe was euthanized by AB F&W due to poor body condition and hemorrhagic diarrhea. At the time of euthanasia, a hard swelling was noted on the right side of the face.

For more information, click the image, or visit www.cwhc-rcsf.ca/quarterlyreport

CREATING A WORLD THAT IS SAFE AND SUSTAINABLE FOR WILDLIFE AND SOCIETY

